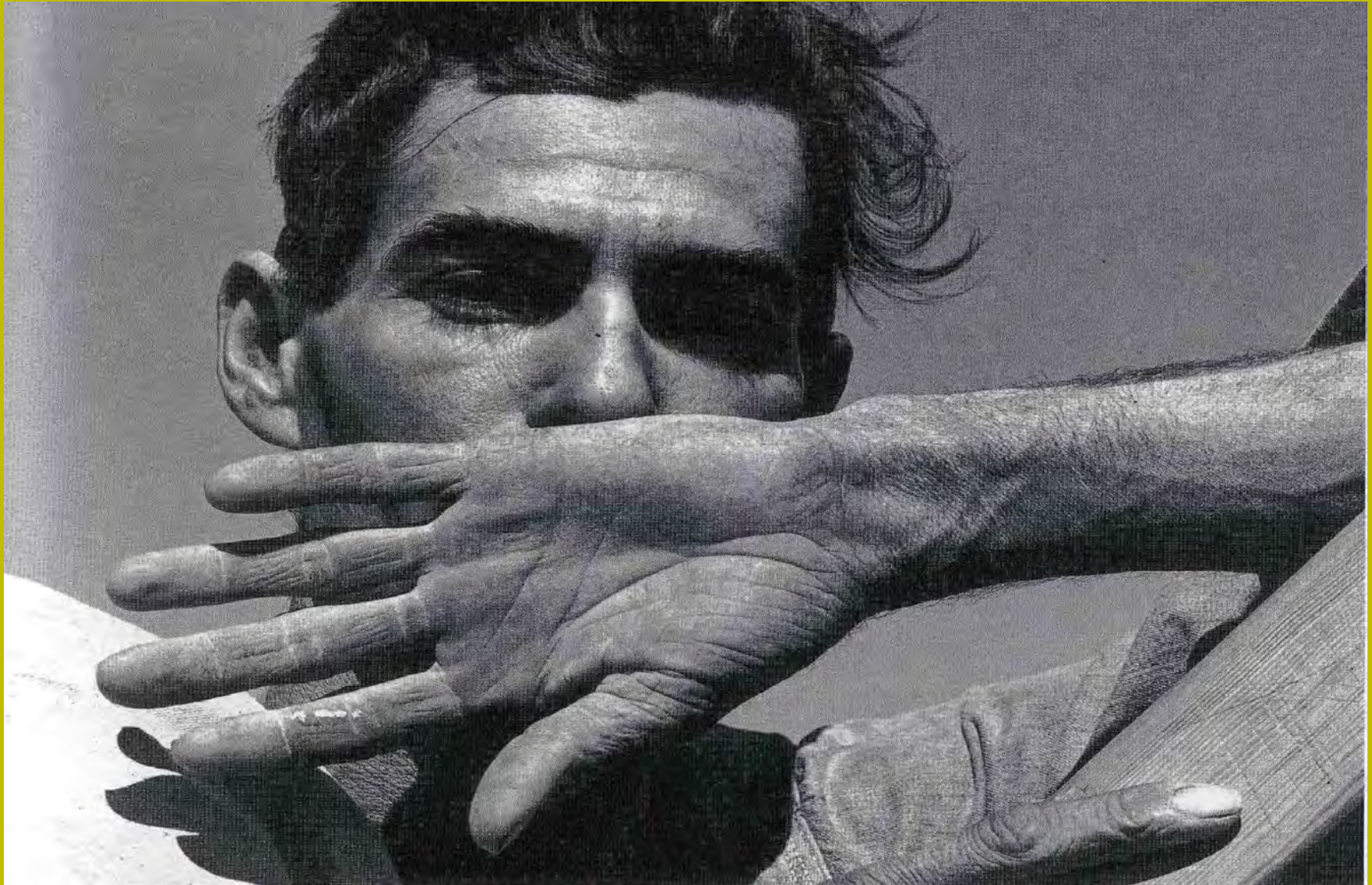


Sara Antonelli

Dorothea Lange

con aggiunte di Enrico Menduni

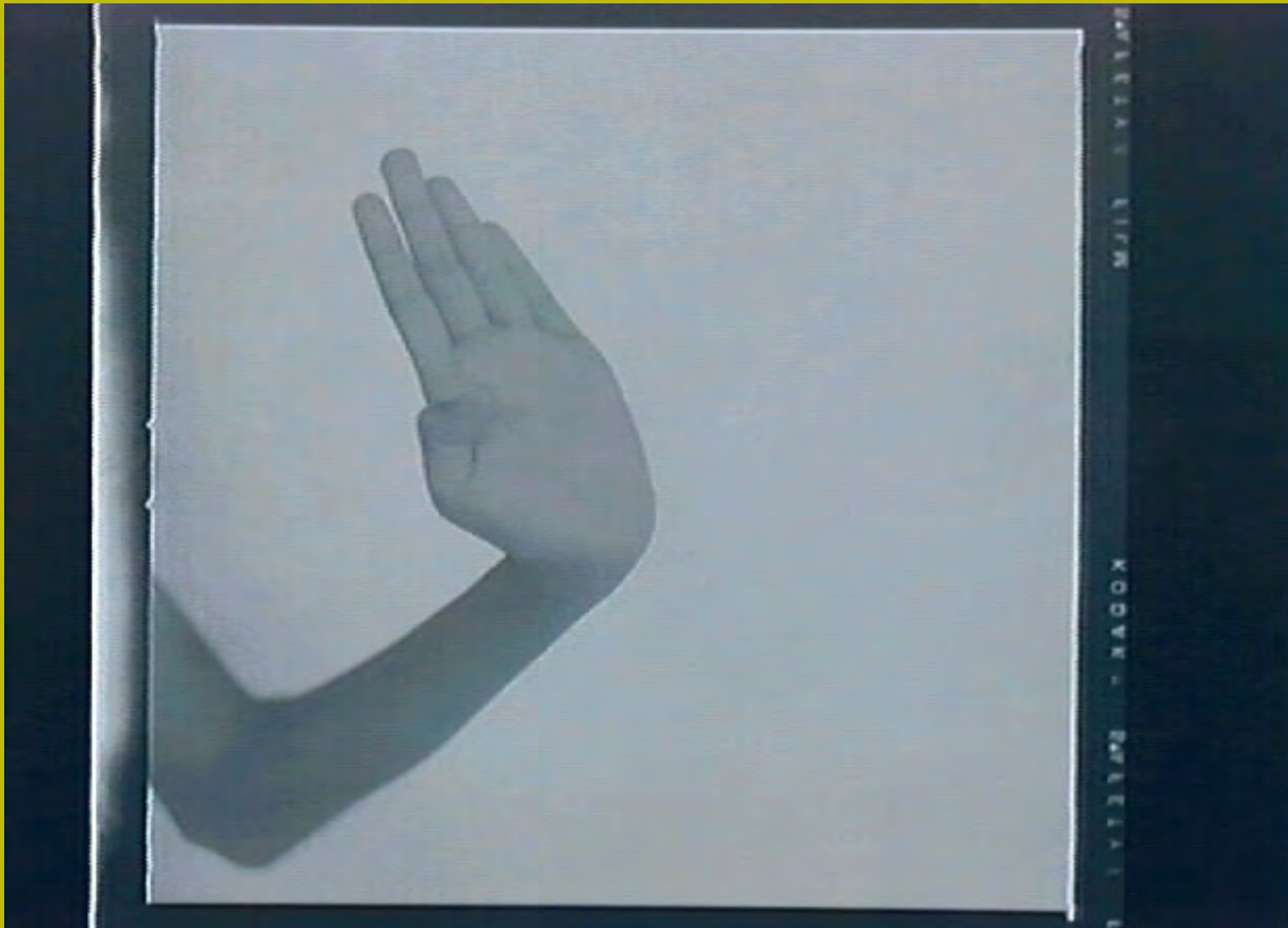
Parte terza



**Dorothea Lange, *Migrant Cotton Picker, Elroy, Arizona, 1940*,
Oakland Museum of California**



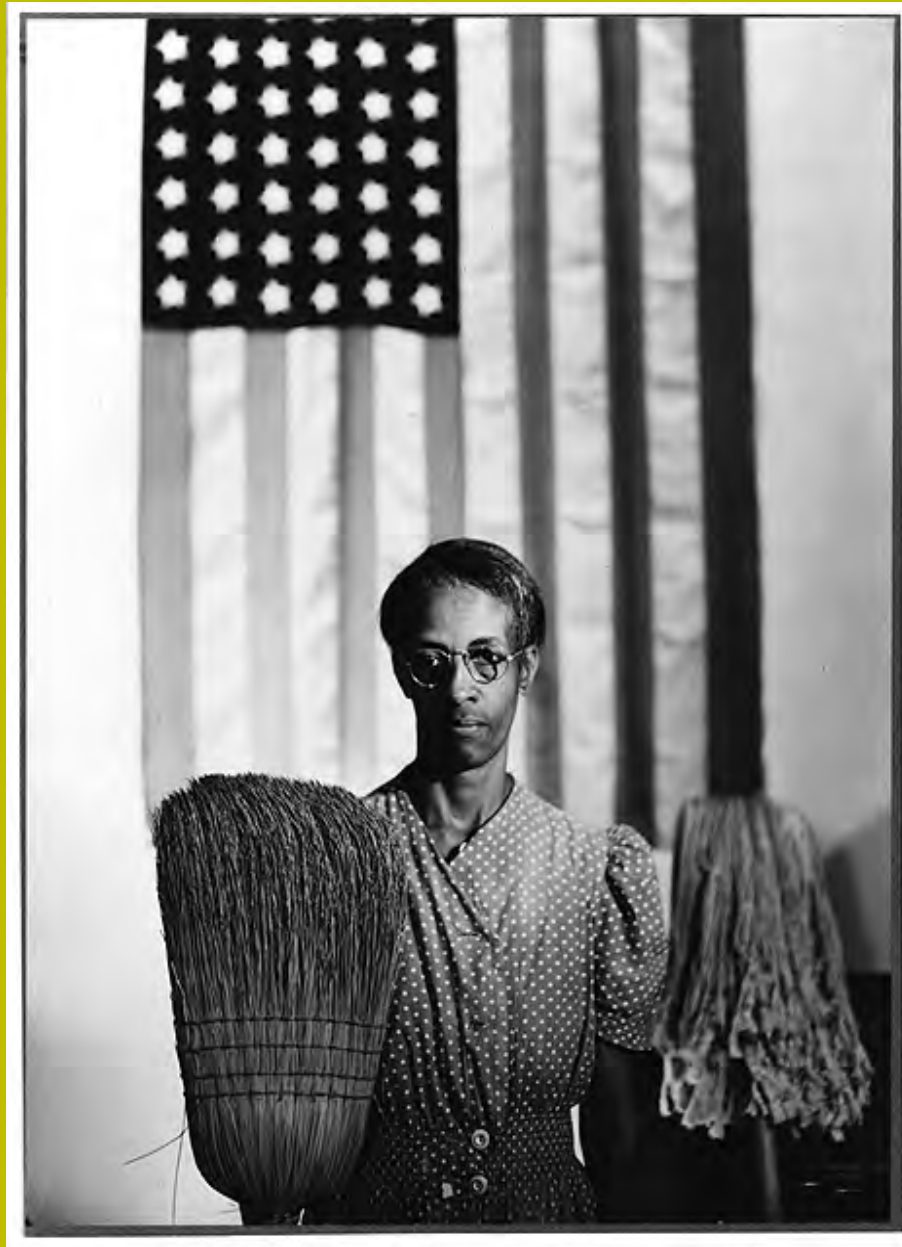
**Dorothea Lange, *Japan Relocation*, 1942,
(Trasferimento forzato dei cittadini americani di origine
giapponese)**



**Dorothea Lange, *Hand, Indonesian Dancer, Java*, 1958,
Oakland Museum of California**

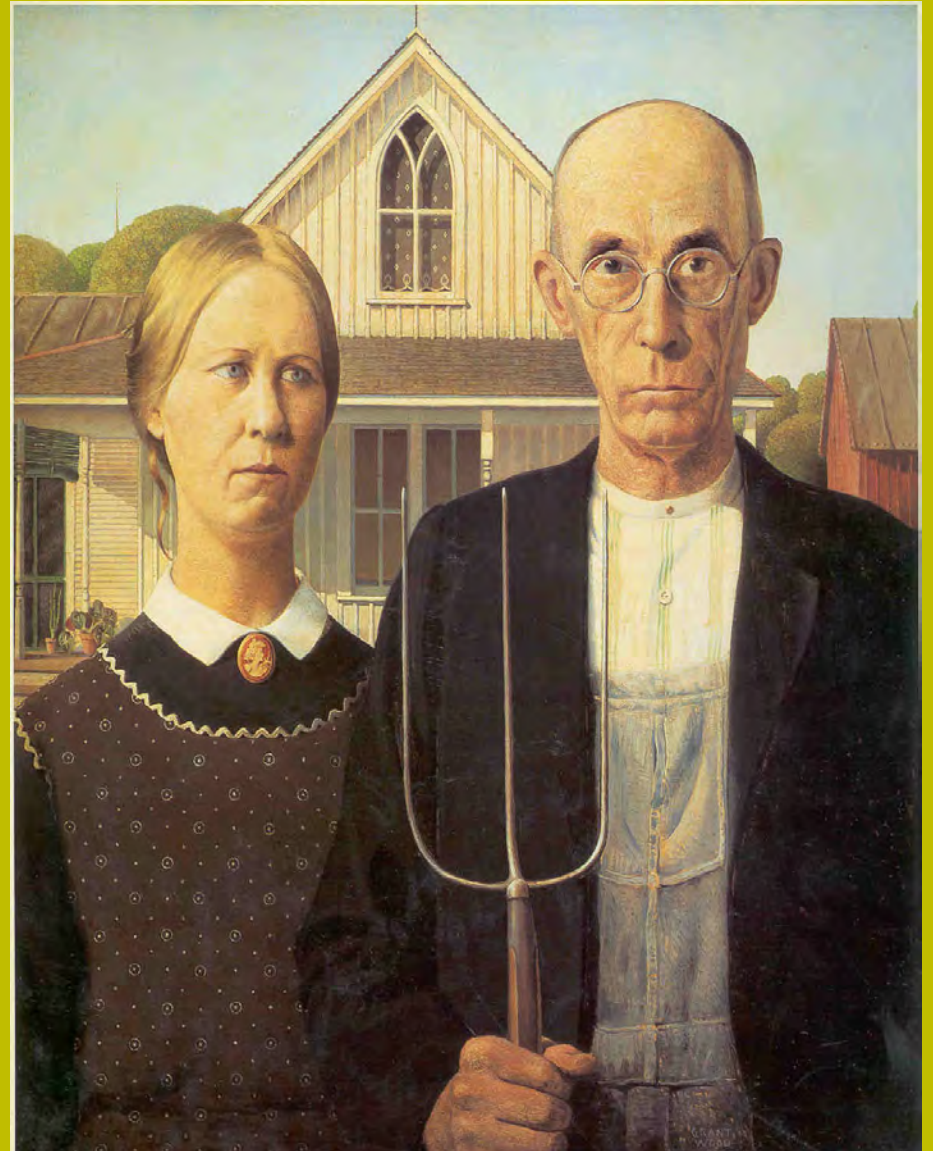


Dorothea Lange, *Bad Trouble over the Weekend*, 1964, Oakland Museum of California



**Gordon Parks, *Ella Watson, US Government Charwoman*
Washington, D.C., July 1942, FSA, LC**

Grant Wood, *American Gothic*, 1932





Walker Evans, *Floyd Burroghs*, Hale County, Ala., Summer 1936, FSA, LC



**Walker Evans, *Part of the Bedroom of Floyd Burroghs' Cabin,*
Hale County, Ala., Summer 1936, FSA, LC**



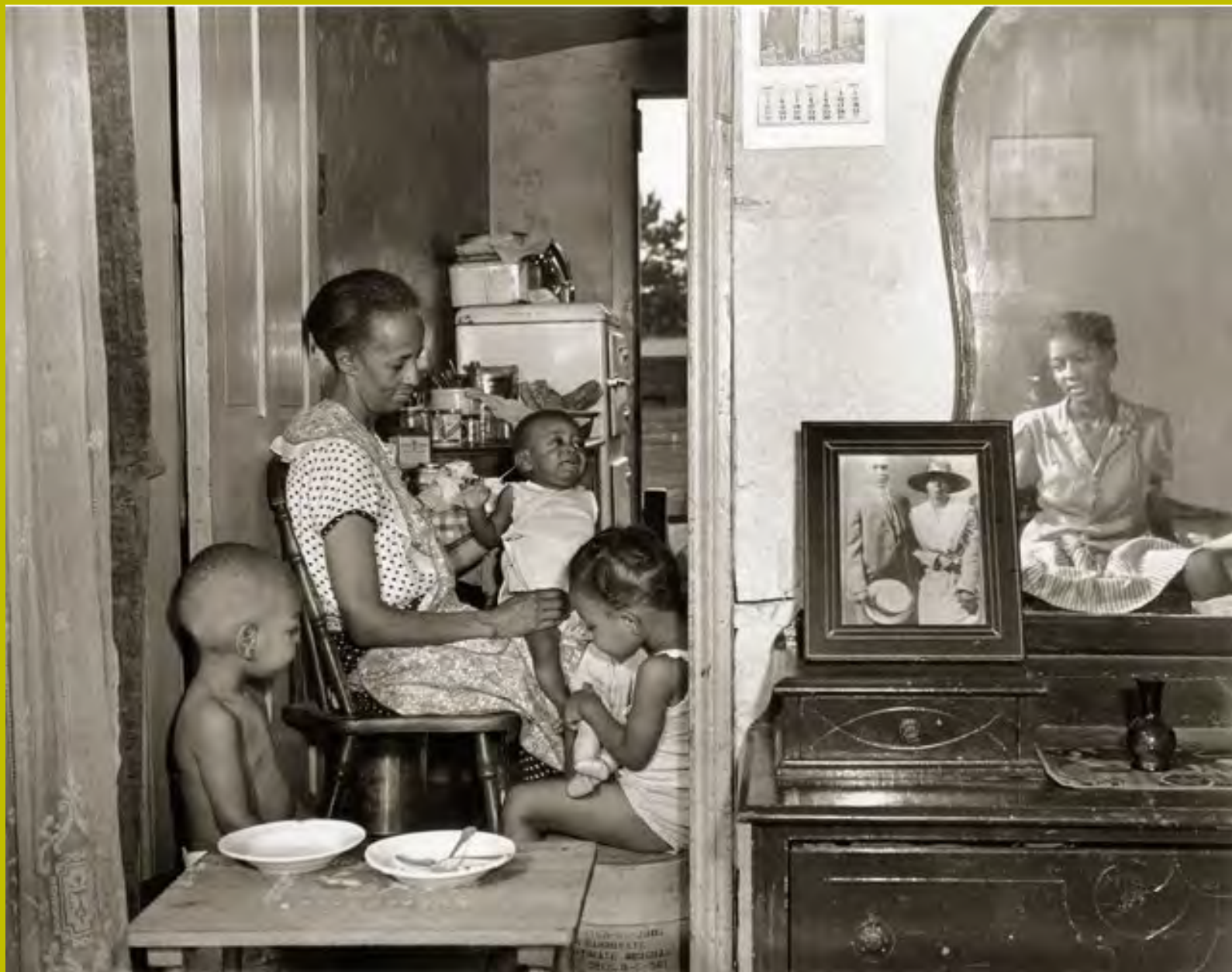
**Walker Evans, *Allie Mae Burroghs*, Hale County, Ala., Summer
1936, *FSA, LC***



**Walker Evans, *Floyd Burroghs*, Hale County, Ala., Summer
1936, FSA, LC**



Walker Evans, *Charles and His Father Floyd*, Hale County, Ala., Summer 1936, FSA, LC



**Gordon Parks, *Ella Watson, la figlia adottata e i tre nipoti*,
Washington, D.C., July 1942, FSA, LC**



Diane Arbus, *Woman with a Baby Monkey*, 1971
The Estate of Diane Arbus

